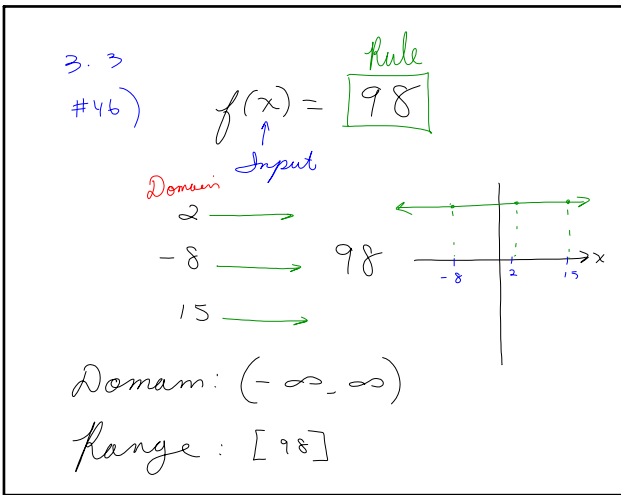


February 11, 2015
 * Quiz #5 - Friday
 . 3 Questions
 * Finding Eq. using all steps!
 * x & y Intercepts
 * Domain of Lines

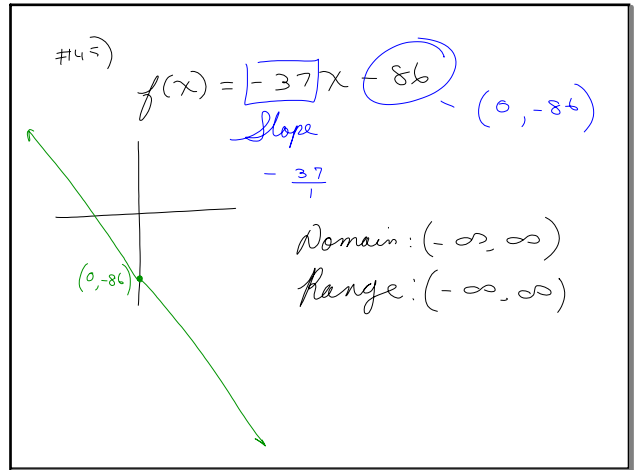
Feb 11-9:58 AM

CJR.com

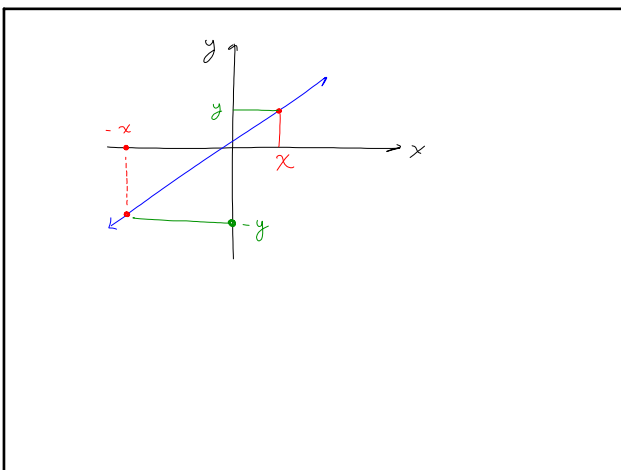
Feb 11-10:17 AM



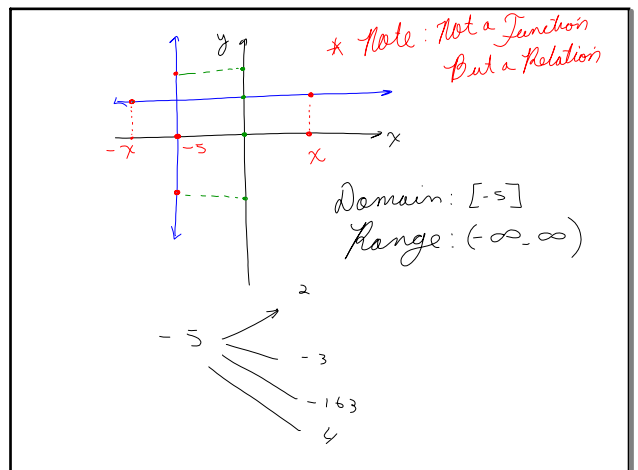
Feb 11-10:23 AM



Feb 11-10:28 AM



Feb 11-10:31 AM



Feb 11-10:33 AM

#47) $f(x) = -12$
 Domain: $(-\infty, \infty)$
 Range: $[-12] \rightarrow \{-12\}$

Feb 11-10:38 AM

#21) $3x + 2y = 6$ *S.F.*
 solve for y
 $\frac{2y}{2} = \frac{-3x}{2} + \frac{6}{2}$
 $y = -\frac{3}{2}x + 3$

Feb 11-10:39 AM

$\frac{6}{1} (y = \frac{5}{6}x - \frac{13}{6})$
 $6y = 5x - 13$
 $-5x + 6y = -13$ ** no neg.*
 $5x - 6y = 13$

Feb 11-10:41 AM

$(8, -5) \neq (-2, 9)$

Feb 11-10:46 AM